

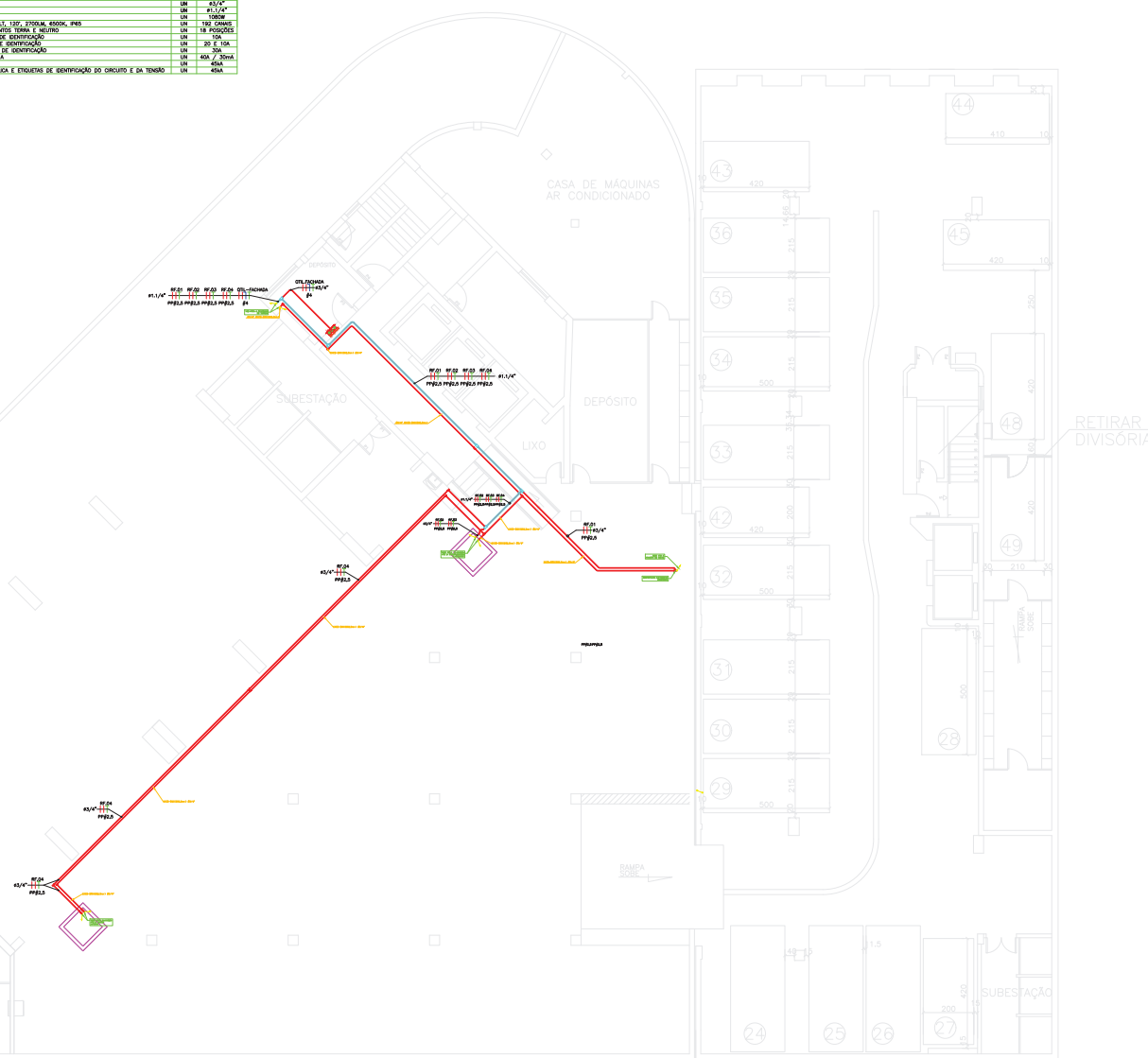
[illegible][illegible][illegible]

*RETOBNO - BRANCO

- 16 – A taxa de aquecimento máximo recomendada pela Norma NBR 14150/2004 é de 40C/ dia durante o projeto e de 20C/ dia durante a execução, para fôrmas aquecidas;
- 17 – A taxa de aquecimento máxima recomendada para concretos com adição de superplastificantes não excede das estruturas e estruturas;
- 18 – Os concretos para as estruturas de distribuição são de 7500/70, F9, adição de plastificante, classe de resistência de 20MPa;
- 19 – Os pilares e vigas deverão ser feitos durante o período de compressão do tubo laboratório, e não após;
- 20 – Os cabos de aço e o aço para protótipo compilarão o mesmo material de encaminhamento (estruturas e estruturas);
- 21 – A distribuição mínima entre os encaminhamentos dos cabos de aço e de aço deverá ser de 20cm;
- 22 – Os quadros deverão ter o levantamento das estruturas e diagrama de perfil de histograma;
- 23 – A largura entre traço e traço nos quadros não deverá ultrapassar 2 vezes o raio interno do tubo de aço;
- 24 – Deve-se considerar os efeitos das variações de temperatura para atender aos requisitos das normas aplicadas, bem como as condições de armazenamento e abastecimento de laboratório do projeto;
- 25 – O equipamento da casa de Engenheiro do equipamento será por meio de traço e estruturas;



PLANTA BAIXA SUBSOLO
ESCALA: 1:100



BUNAL REGIONAL DO TRABALHO DA 3ª REGIÃO | TRT3ª

FÓRUM TRABALHISTA DE BELD HORIZONTE

AV. GETÓLIO Vargas, Nº 225, Funcionárias

RESPONSÁVEL TÉCNICO:
Pedro Jorge Albuquerque Teixeira

PROJETO:
Empreendimento cívico de fachada

GETTING IT RIGHT

CONTENIDO:

instalações elétricas - Planta baixa térreo / legenda / nota / quantitativo de materiais

ARQUIVO ELETRÔNICO : BHZ-GVA CR ELE Iluminação-Fachada R01 FL02 SENG 2021-06-29.dwg

DISCIPLINA: ELÉTRICA


EA-PE 18000036417 02/02


ESCALA:
1/100 = 4


revisão: 001 - 00101

	DATA:
	JUNE 1994

DATA: JUNHO/2019

 TOMADA DE SEMPRETOR BUNA (2,3m), GRACA 2P+T 15A/220V, 1 (UM2) MÓDULO NA COR PRETA, PRAZO GARANTIA ANOS 14+136, CONJUNTO METÁLICO 83x0"

 PROJETOR/REFLETOR BUBALTA 73x158 (1080X) RUBINA, CORPO DE ALUMINIO, IP 68, 220V, 40W, FOCO DUPLA, REDE DINI

 MESA DE CONTROLE DMG, BIVOLT, 192 CMX85

- bona de fase à direita conforme figura a seguir
- CI.XX.ZZ
- 2 3 4
- 127V

- transmissão das vibrações do equipamento.

02 QUANTITATIVO DE MATERIAIS
ESCALA SEM ESCALA

LEGENDA

- ELETRODUTO DE PVC RÍGIDO DE 40x40" COM CONDIÇÕES REQUERIDAS PARA ENCAMINHAMENTO DE CABOS ELÉTRICOS FIXADO NA LAJE ARMADA DE TRAVESSES A CADA 1,5M A FIM DE EVITAR O FENÔMENO DE "BOLINA".
- ELETRODUTO DE PVC RÍGIDO DE 40x40" COM CONDIÇÕES REQUERIDAS PARA ENCAMINHAMENTO DE CABOS ELÉTRICOS, FIXADO NA LAJE ARMADA DE TRAVESSES A CADA 1,5M A FIM DE EVITAR O FENÔMENO DE "BOLINA".
- ELETRODUTO EMBOLO/ENDEREÇO NO PISO
- CABOS FASE, NEUTRO, TERRA E RETORNO CIRCUITO "N", RETORNO "V".
- CONJUNTO MODULAR DE ALUMINIO COM TAMPA CEGA, TAMPA E ABAIXADOR PARA 2, 3 OU 4 SAÍDAS DE 40x40".
- CONJUNTO MODULAR DE ALUMINIO COM TAMPA CEGA, TAMPA E ABAIXADOR PARA 2, 3 OU 4 SAÍDAS DE 40x40".
- DESDOBRAMENTO DE CABOS
- QUADRO DE DISTRIBUIÇÃO P.V.C. PORTA ARTICULADA BRANCA, 18 POSIÇÕES DIN, BARRAMENTO TERRA E NEUTRO
- TAMPA DE DISTRIBUIÇÃO P.V.C. (18x18), (24x24), (30x30), (36x36), (42x42), (48x48), (54x54), (60x60), (66x66), (72x72), (78x78), (84x84), (90x90), (96x96), (102x102), (108x108), (114x114), (120x120), (126x126), (132x132), (138x138), (144x144), (150x150), (156x156), (162x162), (168x168), (174x174), (180x180), (186x186), (192x192), (198x198), (204x204), (210x210), (216x216), (222x222), (228x228), (234x234), (240x240), (246x246), (252x252), (258x258), (264x264), (270x270), (276x276), (282x282), (288x288), (294x294), (300x300), (306x306), (312x312), (318x318), (324x324), (330x330), (336x336), (342x342), (348x348), (354x354), (360x360), (366x366), (372x372), (378x378), (384x384), (390x390), (396x396), (402x402), (408x408), (414x414), (420x420), (426x426), (432x432), (438x438), (444x444), (450x450), (456x456), (462x462), (468x468), (474x474), (480x480), (486x486), (492x492), (498x498), (504x504), (510x510), (516x516), (522x522), (528x528), (534x534), (540x540), (546x546), (552x552), (558x558), (564x564), (570x570), (576x576), (582x582), (588x588), (594x594), (600x600), (606x606), (612x612), (618x618), (624x624), (630x630), (636x636), (642x642), (648x648), (654x654), (660x660), (666x666), (672x672), (678x678), (684x684), (690x690), (696x696), (702x702), (708x708), (714x714), (720x720), (726x726), (732x732), (738x738), (744x744), (750x750), (756x756), (762x762), (768x768), (774x774), (780x780), (786x786), (792x792), (798x798), (804x804), (810x810), (816x816), (822x822), (828x828), (834x834), (840x840), (846x846), (852x852), (858x858), (864x864), (870x870), (876x876), (882x882), (888x888), (894x894), (900x900), (906x906), (912x912), (918x918), (924x924), (930x930), (936x936), (942x942), (948x948), (954x954), (960x960), (966x966), (972x972), (978x978), (984x984), (990x990), (996x996), (1002x1002), (1008x1008), (1014x1014), (1020x1020), (1026x1026), (1032x1032), (1038x1038), (1044x1044), (1050x1050), (1056x1056), (1062x1062), (1068x1068), (1074x1074), (1080x1080), (1086x1086), (1092x1092), (1098x1098), (1104x1104), (1110x1110), (1116x1116), (1122x1122), (1128x1128), (1134x1134), (1140x1140), (1146x1146), (1152x1152), (1158x1158), (1164x1164), (1170x1170), (1176x1176), (1182x1182), (1188x1188), (1194x1194), (1200x1200), (1206x1206), (1212x1212), (1218x1218), (1224x1224), (1230x1230), (1236x1236), (1242x1242), (1248x1248), (1254x1254), (1260x1260), (1266x1266), (1272x1272), (1278x1278), (1284x1284), (1290x1290), (1296x1296), (1302x1302), (1308x1308), (1314x1314), (1320x1320), (1326x1326), (1332x1332), (1338x1338), (1344x1344), (1350x1350), (1356x1356), (1362x1362), (1368x1368), (1374x1374), (1380x1380), (1386x1386), (1392x1392), (1398x1398), (1404x1404), (1410x1410), (1416x1416), (1422x1422), (1428x1428), (1434x1434), (1440x1440), (1446x1446), (1452x1452), (1458x1458), (1464x1464), (1470x1470), (1476x1476), (1482x1482), (1488x1488), (1494x1494), (1500x1500), (1506x1506), (1512x1512), (1518x1518), (1524x1524), (1530x1530), (1536x1536), (1542x1542), (1548x1548), (1554x1554), (1560x1560), (1566x1566), (1572x1572), (1578x1578), (1584x1584), (1590x1590), (1596x1596), (1602x1602), (1608x1608), (1614x1614), (1620x1620), (1626x1626), (1632x1632), (1638x1638), (1644x1644), (1650x1650), (1656x1656), (1662x1662), (1668x1668), (1674x1674), (1680x1680), (1686x1686), (1692x1692), (1698x1698), (1704x1704), (1710x1710), (1716x1716), (1722x1722), (1728x1728), (1734x1734), (1740x1740), (1746x1746), (1752x1752), (1758x1758), (1764x1764), (1770x1770), (1776x1776), (1782x1782), (1788x1788), (1794x1794), (1800x1800), (1806x1806), (1812x1812), (1818x1818), (1824x1824), (1830x1830), (1836x1836), (1842x1842), (1848x1848), (1854x1854), (1860x1860), (1866x1866), (1872x1872), (1878x1878), (1884x1884), (1890x1890), (1896x1896), (1902x1902), (1908x1908), (1914x1914), (1920x1920), (1926x1926), (1932x1932), (1938x1938), (1944x1944), (1950x1950), (1956x1956), (1962x1962), (1968x1968), (1974x1974), (1980x1980), (1986x1986), (1992x1992), (1998x1998), (2004x2004), (2010x2010), (2016x2016), (2022x2022), (2028x2028), (2034x2034), (2040x2040), (2046x2046), (2052x2052), (2058x2058), (2064x2064), (2070x2070), (2076x2076), (2082x2082), (2088x2088), (2094x2094), (2100x2100), (2106x2106), (2112x2112), (2118x2118), (2124x2124), (2130x2130), (2136x2136), (2142x2142), (2148x2148), (2154x2154), (2160x2160), (2166x2166), (2172x2172), (2178x2178), (2184x2184), (2190x2190), (2196x2196), (2202x2202), (2208x2208), (2214x2214), (2220x2220), (2226x2226), (2232x2232), (2238x2238), (2244x2244), (2250x2250), (2256x2256), (2262x2262), (2268x2268), (2274x2274), (2280x2280), (2286x2286), (2292x2292), (2298x2298), (2304x2304), (2310x2310), (2316x2316), (2322x2322), (2328x2328), (2334x2334), (2340x2340), (2346x2346), (2352x2352), (2358x2358), (2364x2364), (2370x2370), (2376x2376), (2382x2382), (2388x2388), (2394x2394), (2400x2400), (2406x2406), (2412x2412), (2418x2418), (2424x2424), (2430x2430), (2436x2436), (2442x2442), (2448x2448), (2454x2454), (2460x2460), (2466x2466), (2472x2472), (2478x2478), (2484x2484), (2490x2490), (2496x2496), (2502x2502), (2508x2508), (2514x2514), (2520x2520), (2526x2526), (2532x2532), (2538x2538), (2544x2544), (2550x2550), (2556x2556), (2562x2562), (2568x2568), (2574x2574), (2580x2580), (2586x2586), (2592x2592), (2598x2598), (2604x2604), (2610x2610), (2616x2616), (2622x2622), (2628x2628), (2634x2634), (2640x2640), (2646x2646), (2652x2652), (2658x2658), (2664x2664), (2670x2670), (2676x2676), (2682x2682), (2688x2688), (2694x2694), (2700x2700), (2706x2706), (2712x2712), (2718x2718), (2724x2724), (2730x2730), (2736x2736), (2742x2742), (2748x2748), (2754x2754), (2760x2760), (2766x2766), (2772x2772), (2778x2778), (2784x2784), (2790x2790), (2796x2796), (2802x2802), (2808x2808), (2814x2814), (2820x2820), (2826x2826), (2832x2832), (2838x2838), (2844x2844), (2850x2850), (2856x2856), (2862x2862), (2868x2868), (2874x2874), (2880x2880), (2886x2886), (2892x2892), (2898x2898), (2904x2904), (2910x2910), (2916x2916), (2922x2922), (2928x2928), (2934x2934), (2940x2940), (2946x2946), (2952x2952), (2958x2958), (2964x2964), (2970x2970), (2976x2976), (2982x2982), (2988x2988), (2994x2994), (3000x3000), (3006x3006), (3012x3012), (3018x3018), (3024x3024), (3030x3030), (3036x3036), (3042x3042), (3048x3048), (3054x3054), (3060x3060), (3066x3066), (3072x3072), (3078x3078), (3084x3084), (3090x3090), (3096x3096), (3102x3102), (3108x3108), (3114x3114), (3120x3120), (3126x3126), (3132x3132), (3138x3138), (3144x3144), (3150x3150), (3156x3156), (3162x3162), (3168x3168), (3174x3174), (3180x3180), (3186x3186), (3192x3192), (3198x3198), (3204x3204), (3210x3210), (3216x3216), (3222x3222), (3228x3228), (3234x3234), (3240x3240), (3246x3246), (3252x3252), (3258x3258), (3264x3264), (3270x3270), (3276x3276), (3282x3282), (3288x3288), (3294x3294), (3300x3300), (3306x3306), (3312x3312), (3318x3318), (3324x3324), (3330x3330), (3336x3336), (3342x3342), (3348x3348), (3354x3354), (3360x3360), (3366x3366), (3372x3372), (3378x3378), (3384x3384), (3390x3390), (3396x3396), (3402x3402), (3408x3408), (3414x3414), (3420x3420), (3426x3426), (3432x3432), (3438x3438), (3444x3444), (3450x3450), (3456x3456), (3462x3462), (3468x3468), (3474x3474), (3480x3480), (3486x3486), (3492x3492), (3498x3498), (3504x3504), (3510x3510), (3516x3516), (3522x3522), (3528x3528), (3534x3534), (3540x3540), (3546x3546), (3552x3552), (3558x3558), (3564x3564), (3570x3570), (3576x3576), (3582x3582), (3588x3588), (3594x3594), (3600x3600), (3606x3606), (3612x3612), (3618x3618), (3624x3624), (3630x3630), (3636x3636), (3642x3642), (3648x3648), (3654x3654), (3660x3660), (3666x3666), (3672x3672), (3678x3678), (3684x3684), (3690x3690), (3696x3696), (3702x3702), (3708x3708), (3714x3714), (3720x3720), (3726x3726), (3732x3732), (3738x3738), (3744x3744), (3750x3750), (3756x3756), (3762x3762), (3768x3768), (3774x3774), (3780x3780), (3786x3786), (3792x3792), (3798x3798), (3804x3804), (3810x3810), (3816x3816), (3822x3822), (3828x3828), (3834x3834), (3840x3840), (3846x3846), (3852x3852), (3858x3858), (3864x3864), (3870x3870), (3876x3876), (3882x3882), (3888x3888), (3894x3894), (3900x3900), (3906x3906), (3912x3912), (3918x3918), (3924x3924), (3930x3930), (3936x3936), (3942x3942), (3948x3948), (3954x3954), (3960x3960), (3966x3966), (3972x3972), (3978x3978), (3984x3984), (3990x3990), (3996x3996), (4002x4002), (4008x4008), (4014x4014), (4020x4020), (4026x4026), (4032x4032), (4038x4038), (4044x4044), (4050x4050), (4056x4056), (4062x4062), (4068x4068), (4074x4074), (4080x4080), (4086x4086), (4092x4092), (4098x4098), (4104x4104), (4110x4110), (4116x4116), (4122x4122), (4128x4128), (4134x4134), (4140x4140), (4146x4146), (4152x4152), (4158x4158), (4164x4164), (4170x4170), (4176x4176), (4182x4182), (4188x4188), (4194x4194), (4200x4200), (4206x4206), (4212x4212), (4218x4218), (4224x4224), (4230x4230), (4236x4236), (4242x4242), (4248x4248), (4254x4254), (4260x4260), (4266x4266), (4272x4272), (4278x4278), (4284x4284), (4290x4290), (4296x4296), (4302x4302), (4308x4308), (4314x4314), (4320x4320), (4326x4326), (4332x4332), (4338x4338), (4344x4344), (4350x4350), (4356x4356), (4362x4362), (4368x4368), (4374x4374), (4380x4380), (4386x4386), (4392x4392), (4398x4398), (4404x4404), (4410x4410), (4416x4416), (4422x4422), (4428x4428), (4434x4434), (4440x4440), (4446x4446), (4452x4452), (4458x4458), (4464x4464), (4470x4470), (4476x4476), (4482x4482), (4488x4488), (4494x4494), (4500x4500), (4506x4506), (4512x4512), (4518x4518), (4524x4524), (4530x4530), (4536x4536), (4542x4542), (4548x4548), (4554x4554), (4560x4560), (4566x4566), (4572x4572), (4578x4578), (4584x4584), (4590x4590), (4596x4596), (4602x4602), (4608x4608), (4614x4614), (4620x4620), (4626x4626), (4632x4632), (4638x4638), (4644x4644), (4650x4650), (4656x4656), (4662x4662), (4668x4668), (4674x4674), (4680x4680), (4686x4686), (4692x4692), (4698x4698), (4704x4704), (4710x4710), (4716x4716), (4722x4722), (4728x4728), (4734x4734), (4740x4740), (4746x4746), (4752x4752), (4758x4758), (4764x4764), (4770x4770), (4776x4776), (4782x4782), (4788x4788), (4794x4794), (4800x4800), (4806x4806), (4812x4812), (4818x4818), (4824x4824), (4830x4830), (4836x4836), (4842x4842), (4848x4848), (4854x4854), (4860x4860), (4866x4866), (4872x4872), (4878x4878), (4884x4884), (4890x4890), (4896x4896), (4902x4902), (4908x4908), (4914x4914), (4920x4920), (4926x4926), (4932x4932), (4938x4938), (4944x4944), (4950x4950), (4956x4956), (4962x4962), (4968x4968), (4974x4974), (4980x4980), (4986x4986), (4992x4992), (4998x4998), (5004x5004), (5010x5010), (5016x5016), (5022x5022), (5028x5028), (5034x5034), (5040x5040), (5046x5046), (5052x5052), (5058x5058), (5064x5064), (5070x5070), (5076x5076), (5082x5082), (5088x5088), (5094x5094), (5100x5100), (5106x5106), (5112x5112), (5118x5118), (5124x5124), (5130x5130), (5136x5136), (5142x5142), (5148x5148), (5154x5154), (5160x5160), (5166x5166), (5172x5172), (5178x5178), (5184x5184), (5190x5190), (5196x5196), (5202x5202), (5208x5208), (5214x5214), (5220x5220), (5226x5226), (5232x5232), (5238x5238), (5244x5244), (5250x5250), (5256x5256), (5262x5262), (5268x5268), (5274x5274), (5280x5280), (5286x5286), (5292x5292), (5298x5298), (5304x5304), (5310x5310), (5316x5316), (5322x5322), (5328x5328), (5334x5334), (5340x5340), (5346x5346), (5352x5352), (5358x5358), (5364x5364), (5370x5370), (5376x5376), (5382x5382), (5388x5388), (5394x5394), (5400x5400), (5406x5406), (5412x5412), (5418x5418), (5424x5424), (5430x5430), (5436x5436), (5442x5442), (5448x5448), (5454x5454), (5460x5460), (5466x5466), (5472x5472), (5478x5478), (5484x5484), (5490x5490), (5496x5496), (5502x5502), (5508x5508), (5514x5514), (5520x5520), (5526x5526), (5532x5532), (5538x5538), (5544x5544), (5550x5550), (5556x5556), (5562x5562), (5568x5568), (5574x5574), (5580x5580), (5586x5586), (5592x5592), (5598x5598), (5604x5604), (5610x5610), (5616x5616), (5622x5622), (5628x5628), (5634x5634), (5640x5640), (5646x5646), (5652x5652), (5658x5658), (5664x5664), (5670x5670), (5676x5676), (5682x5682), (5688x5688), (5694x5694), (5700x5700), (5706x5706), (5712x5712), (5718x5718), (5724x5724), (5730x5730), (5736x5736), (5742x5742), (5748x5748), (5754x5754), (5760x5760), (5766x5766), (5772x5772), (5778x5778), (5784x5784), (5790x5790), (5796x5796), (5802x5802), (5808x5808), (5814x5814), (5820x5820), (5826x5826), (5832x5832), (5838x5838), (5844x5844), (5850x5850), (5856x5856), (5862x5862), (5868x5868), (5874x5874), (5880x5880), (5886x5886), (5892x5892), (5898x5898), (5904x5904), (5910x5910), (5916x5916), (5922x5922), (5928x5928), (5934x5934), (5940x5940), (5946x5946), (5952x5952), (5958x5958), (5964x5964), (5970x5970), (5976x5976), (5982x5982), (5988x5988), (5994x5994), (6000x6000), (6006x6006), (6012x6012), (6018x6018), (6024x6024), (6030x6030), (6036x6036), (6042x6042), (6048x6048), (6054x6054), (6060x6060), (6066x6066), (6072x6072), (6078x6078), (6084x6084), (6090x6090), (6096x6096), (6102x6102), (6108x6108), (6114x6114), (6120x6120), (6126x6126), (6132x6132), (6138x6138), (6144x6144), (6150x6150), (6156x6156), (6162x6162), (6168x6168), (6174x6174), (6180x6180), (6186x6186), (6192x6192), (6198x6198), (6204x6204), (6210x6210), (6216x6216), (6222x6222), (6228x6228), (6234x6234), (6240x6240), (6246x6246), (6252x6252), (6258x6258), (6264x6264), (6270x6270), (6276x6276), (6282x6282), (6288x6288), (6294x6294), (6300x6300), (6306x6306), (6312x6312), (6318x6318), (6324x6324), (6330x6330), (6336x6336), (6342x6342), (6348x6348), (6354x6354), (6360x6360), (6366x6366), (6372x6372), (6378x6378), (6384x6384), (6390x6390), (6396x6396), (6402x6402), (6408x6408), (6414x6414), (6420x6420), (6426x6426), (6432x6432), (6438x6438), (6444x6444), (6450x6450), (6456x6456), (6462x6462), (6468x6468), (6474x6474), (6480x6480), (6486x6486), (6492x6492), (6498x6498), (6504x6504), (6510x6510), (6516x6516), (6522x6522), (6528x6528), (6534x6534), (6540x6540), (6546x6546), (6552x6552), (6558x6558), (6564x6564), (6570x6570), (6576x6576), (6582x6582), (6588x6588), (6594x6594), (6600x6600), (6606x6606), (6612x6612), (6618x6618), (6624x6624), (6630x6630), (6636x6636), (6642x6642), (6648x6648), (6654x6654), (6660x6660), (6666x6666), (6672x6672), (6678x6678), (6684x6684), (6690x6690), (6696x6696), (6702x6702), (6708x6708), (6714x6714), (6720

